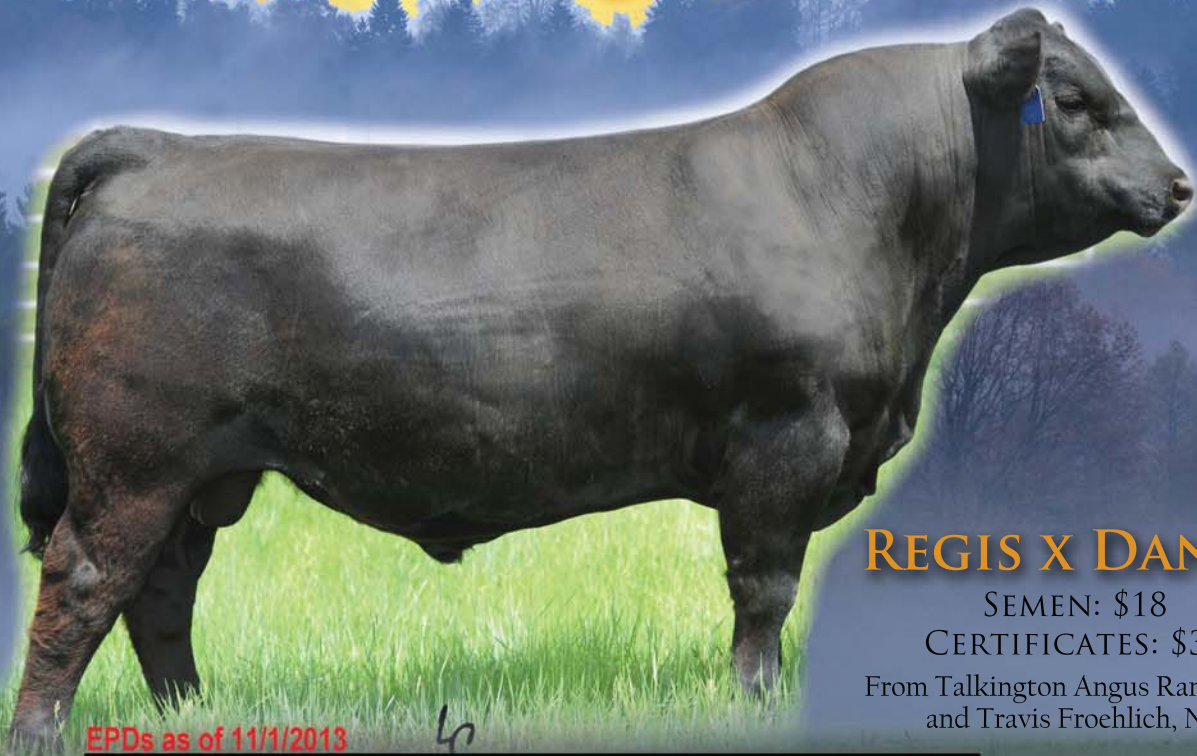


SAT REVIVAL 210 › 7AN386 › 17329930

Revival



REGIS X DANNY

SEMEN: \$18

CERTIFICATES: \$35

From Talkington Angus Ranch, ND
and Travis Froehlich, ND

EPDs as of 11/1/2013

	CED	BW	WW	YW	Milk	Doc	CW	Marb	REA	\$W	\$B
EPD	+15	-1.1	+68	+111	+32	+26	+29	+0.36	+0.68	+46.03	+71.23
Acc	.39	.46	.35	.36	.17	.38	.27	.39	.30		
% Rank	1	10	2	10	10	4			15	1	

EXCELS FOR \$W AND CLAIMS A SUPER COW AS HIS DAM LOW BW, HIGH WW GENETICS IN A THICK, MODERATE PACKAGE

Revival sports an impressive EPD slate with an emphasis on calving ease with explosive early growth. He got a 2nd-chance at the big-time with a genomic evaluation that boosted him to a special place. Revival's dam is a model female that excels for udder quality, capacity and impressive ratios of 2@95 for BW and 2 @116 for WW. Thick, extremely sound, moderate-sized and gentle, expect this Regis son to deliver easily-born calves with shape, style and performance and young females that mature into excellent cows.

Conception. Calving Ease. Carcass. Cows.

Phone: (614) 873-4683 www.selectsiresbeef.com



YOUR SUCCESS *Our Passion*