

# STALKINGTON ANGUS RANCH

**11TH ANNUAL  
PRODUCTION SALE  
FRIDAY, FEBRUARY 11, 2022**

**1:30 PM AT THE RANCH • BELFIELD, NORTH DAKOTA**

*Maternally oriented • Balanced-trait philosophy*

**SELLING 65 ANGUS BULLS**







*Shane & Amanda Talkington  
Abby, Hadley and Cade*



**Shane & Amanda Talkington**

701-575-4159 • 701-290-7222

3137 136th Ave SW • Belfield, ND  
talkingtonangusranch@yahoo.com

www.[TalkingtonAngusRanch.com](http://TalkingtonAngusRanch.com)



*Welcome* to the 11<sup>th</sup> annual Talkington Angus Ranch Bull Sale. We are extremely grateful for your interest in our program and past patronage. We are proud to offer this uniform and honest set of thick, stout, Angus bulls.

These bulls are developed with longevity and fertility in mind, they are not creep fed and they are grown and developed in a sensible manner. The goal is to raise bulls that last, not to see how much condition we can put on them by sale day. The bulls are fully guaranteed for the first breeding season, are freeze branded for permanent identification, have been genomically tested to create the most accurate EPD's possible, and are all parent verified.

Our cow herd is fertile, functional, and easy fleshing. We run and treat our registered cows just like our commercial cows and our customers cows. We believe the single most important driver to profitability in the cow-calf business is fertility. Cows must get pregnant every year on a timely basis to be profitable. That is why we give every registered cow 45 days to get pregnant and have for years. If she does not, she leaves, no excuses, no second chances. We believe in a balanced trait, maternal philosophy. We focus on the so called "convenience traits". Things like udder quality, foot quality, dispositions, maternal instinct, all things that we take for granted here, but realize that is not the case everywhere.

We invite you to come visit before the sale and go through the bulls and their dams. Follow us on Facebook or our website for updated pictures, videos, and sale supplements and updates. Videos will also be available on DVAuctio.com.

Sincerely,

*Shane, Amanda, Abby, Hadley, and Cade Talkington*





# S TALKINGTON T ANGUS RANCH

11<sup>th</sup> Annual Production Sale

**FRIDAY**

**FEB. 11, 2022**

1:30 PM at the Ranch • Belfield, ND

**SELLING 65 ANGUS BULLS**

## **SALE DAY PHONE NUMBERS**

Shane's Cell: 701-290-7222  
Amanda's Cell: 701-290-5030

Videos of all sale bulls are available at  
[www.talkingtonangusranch.com](http://www.talkingtonangusranch.com) and  
[www.dvauction.com](http://www.dvauction.com)

**LIABILITY:** All persons who attend the sale do so at their own risk and Talkington Angus Ranch assumes no liability, legal or otherwise, for any accidents which may occur.

**LUNCH:** There will be a complimentary lunch provided on sale day.

**SALE LOCATION:** We will hold the sale and lunch at our heated shop 2 miles northwest of Belfield. The bulls will be penned there that morning and will be available for viewing by 10:00 am.

**DIRECTIONS:** From the junction of I-94 and Highway 85 (Exit 42): ½ mile north to 35th Street, 1 ½ miles west, on the north side of the road.

**HEALTH PROGRAM:** The bulls have been poured with Cleanup II. They have received Safeguard. All bulls will be vaccinated with Fusogard for foot rot and Pregguard 10 prior to delivery.

**SEMEN EVALUATION:** All bulls will pass a breeding soundness exam performed by Dr. Chance Noyce, Circle C Veterinary, prior to delivery.

**VOLUME DISCOUNTS:** We will discount purchases of multiple bulls starting at 3% on 3 bulls up to 5% on 5 bulls or more.

## **TERMS AND CONDITIONS:**

Bulls sell under the standard terms and conditions of the American Angus Association. Terms of the sale are cash. Full payment is due sale day. For purchases made through DVAuction, please remit Payment to Talkington Angus Ranch, 3137 136th Ave SW, Belfield, ND 58622.

**DELIVERY:** We will start delivering bulls April 1. We offer free delivery within 500 miles.

**GUARANTEE:** All bulls sell with a 90-day breeding season guarantee. We will guarantee them for the purchase price minus a preset salvage value of \$1500, or provide a replacement bull, if a suitable bull is available.

## **SIGHT UNSEEN GUARANTEE:**

If you are unable to attend the sale, but wish to place a bid, call Shane or Amanda, or one of the ringmen. We will also have people available on sale day to handle phone bids. We will handle your bid with honesty and integrity. Your complete satisfaction is guaranteed. The sale will also be available at [www.dvauction.com](http://www.dvauction.com)

## **AUCTIONEER**

Kyle Shobe .....406-366-0472

## **RINGMEN**

John Fischer .....701-290-1606

*Stockmen's Livestock*

Andrew Swanson .....507-829-4133

*Farm & Ranch Guide*

Jared Murnin ..... 406-321-1542

*Western Ag Reporter*

Scott Ressler .....701-391-7310

*N.D. Stockmen's Association*

*Maternally oriented • Balanced-trait philosophy*







*Lot 1*

## SAT TAHOE 165

BD: 3/11/2021 Tattoo: 165 Reg #: 20193730

Tehama Upward Y238  
**Tehama Tahoe B767**  
 Tehama Mary Blackbird Y684

#Sitz Upward 307R  
 Tehama Elite Blackbird T735  
 #S A V Final Answer 0035  
 Tehama Mary Blackbird T073  
 #Sinclair Fortunate Son  
 Rosetta 7174 of Mc Cumber  
 #S A V Final Answer 0035  
 Ox Bow Eisa Evergreen 6147

Mc Cumber Fortunate 367  
**SAT Eisa Evergreen 8188**  
 Ox Bow Eisa Evergreen 979

BW	90
ADJ 205	784
WWR	112
Proj. Sale Day Wt.	1278
Adj. Scrotal	37.3
Dam's Ratio	2/104

CE	BW	WW	YW	Milk	SC	DOC	Marb.	REA	\$M
3	2.7	91	151	34	0.48	18	0.59	0.64	92

165 is dense bodied with mass and power. His foot quality is exceptional. This high-performance bull tops our offering for both WW and YW EPD's. In fact, this bull is so unique in what he does, if you combine his WW and YW EPD's with the two maternal indexes, \$W and \$M, and throw in the fact that he does this in a moderate package with a .4 YH EPD, he is one of only 2 bulls in the breed. His young Fortunate dam adds mating flexibility and is off to a great start ratioing 2/96 for BW to go with her 2/104 for WW. His granddam ratios 11/95 for BW and 11/103 for WW. She will be 13 years old this spring and she is the only cow we kept over 10 years of age due to the drought. Her feet are perfect, and she is easy fleshing with a great udder. Longevity, fertility, performance, maternal, and the potential to be a foot improver all in one package.

*reference sire*



## TEHAMA TAHOE B767

Reg # 17817177

Tehama Upward Y238 x SAV Final Answer

Tahoe has earned the reputation as one of the most complete bulls in the breed. He possesses calving ease, performance, maternal traits, and end-product value while improving phenotype in a high reliability package. Tahoe's progeny are eye-appealing, with dimension, middle, and muscle shape in a moderate package. His daughters in production are beautiful, easy-fleshing, and deep-ribbed with excellent udder quality and teat length. Tahoe is a balanced trait bull whose progeny have been very well received and our high selling sire group the last two years.

CE	BW	WW	YW	Milk	SC	Doc	Marb	REA	\$M
10	0	78	135	33	1.16	21	0.9	0.96	93





Lot 2

### SAT TAHOE 123

BD: 3/6/2021 Tattoo: 123 Reg #: 20193757

Tehama Upward Y238  
**Tehama Tahoe B767**  
 Tehama Mary Blackbird Y684  
  
 SAT Revival 210  
**SAT Blackbird 805**  
 SAT Blackbird 6212-107

#Sitz Upward 307R  
 Tehama Elite Blackbird T735  
 #S A V Final Answer 0035  
 Tehama Mary Blackbird T073  
 #Coleman Regis 904  
 SAT Dixie 010  
 Mc Cumber Fortunate 367  
 R&D Blackbird 902-107

BW	78
ADJ 205	793
WWR	114
Proj. Sale Day Wt.	1233
Adj. Scrotal	36.1
Dam's Ratio	2/111

CE	BW	WW	YW	Milk	SC	DOC	Marb.	REA	\$M
5	-0.1	66	108	35	0.73	12	0.42	0.56	81

Eye appealing bull that is smooth made with a nice front third and plenty of body mass to go along with it. I would not hesitate to use this bull on heifers, but he still has plenty of performance to use on cows. 123 really spread out his birth to weaning starting out at 78 pounds and weaning off at 793 pounds. His coming 4-year-old Revival dam is proving herself as a future high impact cow in our herd with ratios of 2/95 for BW and 2/111 for WW.

Lot 3

### SAT TAHOE 1101

BD: 3/16/2021 Tattoo: 1101 Reg #: 20192336

Tehama Upward Y238  
**Tehama Tahoe B767**  
 Tehama Mary Blackbird Y684  
  
 Brooking Prosecutor 222  
**SAT Princess 772**  
 #Princess 550 BCBR

#Sitz Upward 307R  
 Tehama Elite Blackbird T735  
 #S A V Final Answer 0035  
 Tehama Mary Blackbird T073  
 #Soo Line Motive 9016  
 Soo Line Lass 0400  
 #Rito 6I6 of 4B20 6807  
 Princess 3194 BCBR

BW	82
ADJ 205	762
WWR	109
Proj. Sale Day Wt.	1198
Adj. Scrotal	36.5
Dam's Ratio	3/104

CE	BW	WW	YW	Milk	SC	DOC	Marb.	REA	\$M
15	-2.9	71	122	39	0.55	15	0.81	0.94	97

The Tahoe x Prosecutor mating has worked well for us, making 1101 a ¼ brother to Wolverine, who is starting off a tremendous sales career at Select Sires. This bull will work on heifers or cows. 1101 is another very unique bull genetically, if you take his level of CED, BW, \$M, and \$W, he is again, one of only two bulls in the breed. His granddam was a Pathfinder that owned a WW ratio of 7/110, she was in our embryo program and recorded 35 progeny.

Calving ease, fertility, maternal, and performance are all likely from this moderate, high-volume bull.







Lot 4

## SAT TAHOE 172

BD: 3/12/2021 Tattoo: 172 Reg #: 20193831

Tehama Upward Y238 #Sitz Upward 307R  
**Tehama Tahoe B767** Tehama Elite Blackbird T735  
 Tehama Mary Blackbird Y684 #S A V Final Answer 0035  
 Tehama Mary Blackbird T073  
 Brooking Prosecutor 222 #Soo Line Motive 9016  
**SAT Eola 784** Soo Line Lass 0400  
 Osa Mustang Krugger of U17 #S A V Mustang 9134  
 OSA Ms Solution U17

BW	90
ADJ 205	733
WWR	105
Proj. Sale Day Wt.	1203
Adj. Scrotal	36.8
Dam's Ratio	3/105

CE	BW	WW	YW	Milk	SC	DOC	Marb.	REA	SM
10	0	72	128	34	0.76	25	0.93	0.84	71

Body mass and thickness in this Tahoe son. Extremely gentle bull. 172 is out of a really good young Prosecutor x Mustang that is well on her way to becoming a Pathfinder. Her son last year was our lead off Navigator. Lot 4's Mustang granddam has a 7/103 ratio for WW. ¾ brother to Lot 3, 7, 11, 16, and Wolverine.



Lot 5

## SAT TAHOE 168

BD: 3/11/2021 Tattoo: 168 Reg #: 20193833

Tehama Upward Y238 #Sitz Upward 307R  
**Tehama Tahoe B767** Tehama Elite Blackbird T735  
 Tehama Mary Blackbird Y684 #S A V Final Answer 0035  
 Tehama Mary Blackbird T073  
 Ellingson Versatile #S A V Resource 1441  
**SAT Mabel 7108** SAV Blackclass 124 EA  
 SAT Mabel 331 #Coleman Regis 904  
 SAT Mabel 901

BW	82
ADJ 205	696
WWR	100
Proj. Sale Day Wt.	1153
Adj. Scrotal	35.3
Dam's Ratio	3/101

CE	BW	WW	YW	Milk	SC	DOC	Marb.	REA	SM
11	0.7	69	115	26	0.56	15	0.49	1.03	85

Thick topped, wide based bull here. His Calving ease potential is backed by his dams BW ratio of 3/98 and his grand dams BW ratio of 6/90. His granddam also possesses a WW ratio of 6/100, a calving interval of 6/365, and has caught AI every year of her life. This bull has the largest REA EPD of any bull in our sale and it shows when you evaluate him.





Lot 6

## SAT TAHOE 173

BD: 3/13/2021 Tattoo: 173 Reg #: 20193732

Tehama Upward Y238	#Sitz Upward 307R	BW	87
<b>Tehama Tahoe B767</b>	Tehama Elite Blackbird T735	ADJ 205	658
Tehama Mary Blackbird Y684	#S A V Final Answer 0035	WWR	94
Ellingson Resource 4201	Tehama Mary Blackbird T073	Proj. Sale Day Wt.	1128
<b>SAT Primrose 8232</b>	#S A V Resource 1441	Adj. Scrotal	36.9
SAT Primrose 485	#E A Bemindful Maid 709	Dam's Ratio	2/100
	#Coleman Regis 904		
	#Primrose 6911 BCBR		

CE	BW	WW	YW	Milk	SC	DOC	Marb.	REA	\$M
5	2.4	73	128	25	1.11	19	0.4	0.64	73

Stout made bull, which is what we have come to expect out of the Resource 4201 daughters. They are high volume, easy fleshing COWS.



Lot 7

## SAT TAHOE 196

BD: 3/15/2021 Tattoo: 196 Reg #: 20193739

Tehama Upward Y238	#Sitz Upward 307R	BW	107
<b>Tehama Tahoe B767</b>	Tehama Elite Blackbird T735	ADJ 205	778
Tehama Mary Blackbird Y684	#S A V Final Answer 0035	WWR	112
Brooking Prosecutor 222	Tehama Mary Blackbird T073	Proj. Sale Day Wt.	1178
<b>SAT Miss Value 896</b>	#Soo Line Motive 9016	Adj. Scrotal	36.5
R&D Miss Value 989-116	Soo Line Lass 0400	Dam's Ratio	2/112
	#GDAR Game Day 449		
	R&D Value 309-989		

CE	BW	WW	YW	Milk	SC	DOC	Marb.	REA	\$M
0	3.1	77	138	36	1.19	13	0.62	0.91	65

¾ brother to Lot 3, 4, 11, 16, and Wolverine. Some good cows behind this bull. His dam weaned off the heaviest Bravo last year and his granddam is 5/103 for WW.

Lot 8

## SAT TAHOE 1118

BD: 3/18/2021 Tattoo: 1118 Reg #: 20193834

Tehama Upward Y238	#Sitz Upward 307R	BW	82
<b>Tehama Tahoe B767</b>	Tehama Elite Blackbird T735	ADJ 205	672
Tehama Mary Blackbird Y684	#S A V Final Answer 0035	WWR	96
Ellingson Versatile	Tehama Mary Blackbird T073	Proj. Sale Day Wt.	1133
<b>SAT Manor 7133</b>	#S A V Resource 1441	Adj. Scrotal	38.1
Ox Bow Manor 933	SAV Blackclass 124 EA	Dam's Ratio	3/93
	#K C F Bennett Total		
	#Ox Bow Manor 7105		

CE	BW	WW	YW	Milk	SC	DOC	Marb.	REA	\$M
11	-0.5	59	106	25	0.9	7	0.7	0.62	89

1118's granddam is the dam of the Genex stud bull Ox Bow Revival. She has a weaning ratio of 10/101. ¾ brother to lots 5, 14, and 18.

Lot 9

## SAT TAHOE 157

BD: 3/10/2021 Tattoo: 157 Reg #: 20193748

Tehama Upward Y238	#Sitz Upward 307R	BW	92
<b>Tehama Tahoe B767</b>	Tehama Elite Blackbird T735	ADJ 205	682
Tehama Mary Blackbird Y684	#S A V Final Answer 0035	WWR	98
#Koupal Juneau 797	Tehama Mary Blackbird T073	Proj. Sale Day Wt.	1163
<b>SAT Enchantress 8162</b>	#O C C Juneau 807J	Adj. Scrotal	36.8
R&D Enchantress 566	Koupals Elba 187	Dam's Ratio	1/98
	#GDAR Game Day 449		
	#Basin Enchantress S460		

CE	BW	WW	YW	Milk	SC	DOC	Marb.	REA	\$M
-4	3.8	83	131	25	1.25	10	0.34	0.67	104

157 ranks in the top 2% of the breed for Heifer Pregnancy and top 1% for \$M. ¾ brother to lots 10, 12, and 17.

Lot 10

## SAT TAHOE 182

BD: 3/13/2021 Tattoo: 182 Reg #: 20193743

Tehama Upward Y238	#Sitz Upward 307R	BW	87
<b>Tehama Tahoe B767</b>	Tehama Elite Blackbird T735	ADJ 205	666
Tehama Mary Blackbird Y684	#S A V Final Answer 0035	WWR	96
#Koupal Juneau 797	Tehama Mary Blackbird T073	Proj. Sale Day Wt.	1143
<b>SAT Blackbird 881</b>	#O C C Juneau 807J	Adj. Scrotal	37.8
Ox Bow Blackbird 8118	Koupals Elba 187	Dam's Ratio	2/96
	#Bon View Emulation Ext 473		
	Ox Bow Blackbird 638		

CE	BW	WW	YW	Milk	SC	DOC	Marb.	REA	\$M
8	0.7	64	106	31	1.56	8	0.64	0.86	81

Grand dam was 10/102 for WW and had a calving interval of 10/366. ¾ brother to lots 9, 12, and 17.





Lot 11

## SAT TAHOE 1136

BD: 3/19/2021 Tattoo: 1136 Reg #: 20193830

Tehama Upward Y238	#Sitz Upward 307R	BW	96
<b>Tehama Tahoe B767</b>	Tehama Elite Blackbird T735	ADJ	205
Tehama Mary Blackbird Y684	#S A V Final Answer 0035	WWR	107
Brooking Prosecutor 222	Tehama Mary Blackbird T073	Proj. Sale Day Wt.	1153
<b>SAT Primrose 7100</b>	#Soo Line Motive 9016	Adj. Scrotal	36.1
#Primrose 6911 BCBR	Soo Line Lass 0400	Dam's Ratio	3/107
	Brooks Direction 3413		
	Primrose 984 B C B R		

CE	BW	WW	YW	Milk	SC	DOC	Marb.	REA	\$M
5	1.7	68	106	32	0.82	3	0.68	0.54	84

The Prosecutors are becoming excellent young cows and the dam to this bull is no exception as she is on her way to Pathfinder status. 1136's granddam had a WW ratio of 10/106 and a calving interval of 10/363. ¼ brother to Lot 3, 4, 7, 16, and Wolverine.

Lot 13

## SAT TAHOE 115

BD: 3/4/2021 Tattoo: 115 Reg #: 20193693

Tehama Upward Y238	#Sitz Upward 307R	BW	78
<b>Tehama Tahoe B767</b>	Tehama Elite Blackbird T735	ADJ	205
Tehama Mary Blackbird Y684	#S A V Final Answer 0035	WWR	99
McD Uno 631	Tehama Mary Blackbird T073	Proj. Sale Day Wt.	1148
<b>SAT Lass 890</b>	#C C A Uno 049	Adj. Scrotal	34.5
SAT Lass 6206	Performiss 029	Dam's Ratio	2/100
	#Koupal Juneau 797		
	R&D Lass 911-104		

CE	BW	WW	YW	Milk	SC	DOC	Marb.	REA	\$M
6	1.3	72	128	34	0.87	-6	0.73	0.86	77

I would be confident to use this bull on heifers as he had a 78-pound BW and his dam owns a BW ratio of 2/91. His granddam has caught AI every year of her life and is a full sister to Juneau 706, our top selling bull in 2018 that we have used in our AI program.

Lot 12

## SAT TAHOE 184

BD: 3/13/2021 Tattoo: 184 Reg #: 20193745

Tehama Upward Y238	#Sitz Upward 307R	BW	65
<b>Tehama Tahoe B767</b>	Tehama Elite Blackbird T735	ADJ	205
Tehama Mary Blackbird Y684	#S A V Final Answer 0035	WWR	92
#Koupal Juneau 797	Tehama Mary Blackbird T073	Proj. Sale Day Wt.	1073
<b>SAT Harmony 865</b>	#O C C Juneau 807J	Adj. Scrotal	34.9
ICC Harmony 1824	Koupals Elba 187	Dam's Ratio	2/96
	#Hoover Dam		
	ER Harmony K256		

CE	BW	WW	YW	Milk	SC	DOC	Marb.	REA	\$M
19	-4.3	66	115	34	0.66	11	0.87	0.95	94

Sure-bet calving ease bull ranking in the top 1% of the breed for CED, BW, CEM, and \$M. He is in exclusive territory if you sort his level of CED, BW, CEM, \$M, and \$W as he is the only bull in the breed at his level for that combination of traits. His 797 dam is 2/86 for BW and his granddam was a beautiful Hoover dam daughter that was 7/94 for BW, 8/100 for WW and 8/367 for calving interval. ¾ brother to lots 9, 10, and 17.

Lot 14

## SAT TAHOE 121

BD: 3/5/2021 Tattoo: 121 Reg #: 20193750

Tehama Upward Y238	#Sitz Upward 307R	BW	76
<b>Tehama Tahoe B767</b>	Tehama Elite Blackbird T735	ADJ	205
Tehama Mary Blackbird Y684	#S A V Final Answer 0035	WWR	93
Ellingson Versatile	Tehama Mary Blackbird T073	Proj. Sale Day Wt.	1133
<b>SAT Manor 856</b>	#S A V Resource 1441	Adj. Scrotal	39
Ox Bow Manor 980	SAV Blackclass 124 EA	Dam's Ratio	2/92
	#Woodhill Foresight		
	Ox Bow Manor 2125		

CE	BW	WW	YW	Milk	SC	DOC	Marb.	REA	\$M
9	0.8	77	143	19	2.05	34	0.66	0.84	87

Interesting calving ease bull. He is our top-ranking bull for three EPD's, scrotal circumference, docility, and heifer pregnancy. Fertility and easy to handle, two of the most important traits to a rancher. If you sort for his level of those three EPD's, he is the only bull in the breed to boast that combination. His calving ease is backed by his dams BW ratio of 2/83 and his potential to sire long lasting, fertile daughters is magnified by his granddam who was 11/89 for BW, 11/100 for WW and still had perfect feet and a beautiful udder when she left here as a coming 13-year-old this fall. ¾ brother to lots 5, 8, and 18.



## Lot 15 SAT TAHOE 1128

BD: 3/19/2021 Tattoo: 1128 Reg #: 20193755

Tehama Upward Y238	#Sitz Upward 307R	BW	102
<b>Tehama Tahoe B767</b>	Tehama Elite Blackbird T735	ADJ 205	663
Tehama Mary Blackbird Y684	#S A V Final Answer 0035	WWR	95
SAT Revival 210	Tehama Mary Blackbird T073	Proj. Sale Day Wt.	1158
<b>SAT Mabel 870</b>	#Coleman Regis 904	Adj. Scrotal	35.6
SAT Mabel 708	SAT Dixie 010	Dam's Ratio	2/99
	#G A R Retail Product		
	SAT Mabel 405		

CE	BW	WW	YW	Milk	SC	DOC	Marb.	REA	\$M
-2	5.1	86	136	30	1.05	19	0.9	0.68	83

Grand dam had a weaning ratio of 10/102 and a calving interval of 11/369. ¾ brother to Lot 2.

## Lot 16 SAT TAHOE 198

BD: 3/16/2021 Tattoo: 198 Reg #: 20193737

Tehama Upward Y238	#Sitz Upward 307R	BW	91
<b>Tehama Tahoe B767</b>	Tehama Elite Blackbird T735	ADJ 205	627
Tehama Mary Blackbird Y684	#S A V Final Answer 0035	WWR	95
Brooking Prosecutor 222	Tehama Mary Blackbird T073	Proj. Sale Day Wt.	1128
<b>SAT Miss Value 878</b>	#Soo Line Motive 9016	Adj. Scrotal	34.5
R&D Miss Value 071 -309	Soo Line Lass 0400	Dam's Ratio	2/92
	R&D Freightliner 705T		
	#R&D Miss Value 309		

CE	BW	WW	YW	Milk	SC	DOC	Marb.	REA	\$M
8	0.7	70	123	30	0.18	4	0.75	0.58	50

Grand dam possessed a WW ratio of 7/102. ¾ brother to Lot 3, 4, 7, 11, and Wolverine.

## Lot 17 SAT TAHOE 170

BD: 3/12/2021 Tattoo: 170 Reg #: 20193741

Tehama Upward Y238	#Sitz Upward 307R	BW	102
<b>Tehama Tahoe B767</b>	Tehama Elite Blackbird T735	ADJ 205	742
Tehama Mary Blackbird Y684	#S A V Final Answer 0035	WWR	106
#Koupal Juneau 797	Tehama Mary Blackbird T073	Proj. Sale Day Wt.	1088
<b>SAT Tess 8124</b>	#O C C Juneau 807J	Adj. Scrotal	37.8
SAT Tess 811	Koupals Elba 187	Dam's Ratio	2/106
	#G A R Retail Product		
	SAT Tess 117		

CE	BW	WW	YW	Milk	SC	DOC	Marb.	REA	\$M
-5	3.5	91	150	20	1.71	26	0.4	0.75	92

170 is an outlier for his WW and YW EPD's. His grandam owned a WW ratio of 8/101 and a calving interval of 9/360. His dam has a deep maternal pedigree, Juneau 797 x Retail Product x Rito 9FB3 x Right Time x Traveler 5204. ¾ brother to lots 9, 10, and 12.

## Lot 18 SAT TAHOE 135

BD: 3/8/2021 Tattoo: 135 Reg #: 20193753

Tehama Upward Y238	#Sitz Upward 307R	BW	87
<b>Tehama Tahoe B767</b>	Tehama Elite Blackbird T735	ADJ 205	597
Tehama Mary Blackbird Y684	#S A V Final Answer 0035	WWR	86
Ellingson Versatile	Tehama Mary Blackbird T073	Proj. Sale Day Wt.	1058
<b>SAT Barbara 8138</b>	#S A V Resource 1441	Adj. Scrotal	32.7
SAT Barbara 404	SAV Blacklass 124 EA	Dam's Ratio	2/89
	#Sitz Upside 547W		
	OSA Barbies Solution M963		

CE	BW	WW	YW	Milk	SC	DOC	Marb.	REA	\$M
5	2.7	76	133	26	0.53	21	0.81	0.78	81

¾ brother to lots 5, 8, and 14.



Can't make the sale? Bid from home with DV Auction's "real-time" internet bidding service! Buying online is as easy as 1, 2, 3...

1. Create an account at [www.dvauction.com](http://www.dvauction.com) under the "register" tab.
2. Apply for bidding approval by clicking on the "details" tab at least 24 hours prior to the auction - a DV representative will notify you when you are approved.
3. Tune in for the sale and make your purchases!

After the sale, contact Shane to arrange transportation and payment. High speed internet is required for successful bidding - be sure to check the lag-time monitor in the top left corner to ensure real-time broadcasts.

**Proxy Bidding:** If you can't make time to watch the sale, register a proxy bid and DVAuction represent your bid while you're away. Look for the "proxy bid" tab on the auction listing and fill in your maximum bids. They'll handle the rest!

**Having troubles?** During the auction, you can type a message to the operator at any time for assistance. DVAuction support can always be reached at (402) 474-5557.





Lot 19

## SAT UNIQUE 1171

BD: 3/25/2021 Tattoo: 1171 Reg #: 20193728

#Plattemere Weigh Up K360  
**Deer Valley Unique 5635**  
 Sitz Henrietta Pride 643T  
  
 #Basin Payweight 1682  
**#SAT Ethelda 682**  
 Marcys 08 Ethelda E 100-8

#Sitz Upward 307R  
 #Barbara of Plattemere 337  
 #Connealy Onward  
 Sitz Henrietta Pride 81M  
 #Basin Payweight 006S  
 21AR O Lass 7017  
 Sitz Gumbo 7474  
 Marcys 05 Ethelda E 93-5

BW	93
ADJ 205	751
WWR	108
Proj. Sale Day Wt.	1243
Adj. Scrotal	35.3
Dam's Ratio	4/106

CE	BW	WW	YW	Milk	SC	DOC	Marb.	REA	\$M
9	0.3	76	131	30	0.16	27	0.9	0.72	86

Bold sprung, massive, and thick. 1171 is a well-balanced bull and is the performance standout of the Unique sire group. His dam is a Pathfinder. ¾ brother to Lot 26.



reference sire



## DEER VALLEY UNIQUE 5635

Reg # 18429666

Plattemere Weigh Up K360 x Connealy Onward

Unique has shown an ability to consistently produce easy keeping, deep bodied, sound structured cattle that perform well and make trouble-free daughters. As an individual, he possesses a combination of structure, mass, dimension, and depth of body. Another balanced trait sire that will improve phenotype and generate useful females.

CE	BW	WW	YW	Milk	SC	Doc	Marb	REA	\$M
8	0.4	71	130	25	0.53	18	0.82	0.94	67



Lot 20

## SAT UNIQUE 1162

BD: 3/23/2021 Tattoo: 1162 Reg #: 20193672

#Plattemere Weigh Up K360  
**Deer Valley Unique 5635**  
 Sitz Henrietta Pride 643T

SAT Revival 210  
**SAT Blackbird 826**  
 SAT Blackbird 6228-314

#Sitz Upward 307R  
 #Barbara of Plattemere 337  
 #Connealy Onward  
 Sitz Henrietta Pride 81M  
 #Coleman Regis 904  
 SAT Dixie 010  
 Mc Cumber Fortunate 367  
 R&D Blackbird 707-314

BW	79
ADJ 205	701
WWR	101
Proj. Sale Day Wt.	1138
Adj. Scrotal	34.7
Dam's Ratio	2/103

CE	BW	WW	YW	Milk	SC	DOC	Marb.	REA	\$M
8	0.8	69	114	20	0.6	1	0.55	0.69	62

Dam is 2/95 for BW ratio to go with her 2/103 WW ratio. 3/4 brother to Lot 28.



Lot 21

## SAT UNIQUE 1141

BD: 3/20/2021 Tattoo: 1141 Reg #: 20193725

#Plattemere Weigh Up K360  
**Deer Valley Unique 5635**  
 Sitz Henrietta Pride 643T

#Connealy Capitalist 028  
**SAT Pride 609**  
 #OSA Rito616 In Focus of 3T3

#Sitz Upward 307R  
 #Barbara of Plattemere 337  
 #Connealy Onward  
 Sitz Henrietta Pride 81M  
 #S A V Final Answer 0035  
 Prides Pita of Conanga 8821  
 #Mytty In Focus  
 OSA 2 878 of N313

BW	83
ADJ 205	710
WWR	102
Proj. Sale Day Wt.	1173
Adj. Scrotal	36.6
Dam's Ratio	4/99

CE	BW	WW	YW	Milk	SC	DOC	Marb.	REA	\$M
13	-0.4	66	119	28	0.62	18	0.64	0.65	69

High volume bull that will work on cows or heifers. His dam is 4/99 for BW and his granddam was a Pathfinder that was 9/97 for BW and 9/104 for WW. 3/4 brother to lots 25 and 27.



Region 7 Basketball Championship Game.





## Lot 22 SAT UNIQUE 1135

BD: 3/19/2021 Tattoo: 1135 Reg #: 20193715

#Plattemere Weigh Up K360	#Sitz Upward 307R	BW	87
<b>Deer Valley Unique 5635</b>	#Barbara of Plattemere 337	ADJ 205	704
Sitz Henrietta Pride 643T	#Connealy Onward	WWR	101
	Sitz Henrietta Pride 81M	Proj. Sale Day Wt.	1183
Ellingson Resource 4201	#S A V Resource 1441	Adj. Scrotal	33.6
<b>SAT Rachel 7229</b>	#E A Bemindful Maid 709	Dam's Ratio	3/107
SAT Rachel 127	Limestone Birthright W255		
	SAT Rachel 505		

CE	BW	WW	YW	Milk	SC	DOC	Marb.	REA	\$M
8	0.4	63	107	29	0.71	22	0.63	1	72

High-capacity powerhouse out of a tremendous young Resource 4201 daughter who will soon be a Pathfinder as she is not only 3/107 for WW ratio, but also 3/96 for BW ratio. As a 2-year-old she weaned off the heaviest calf in the herd and he was a feature Tahoe son in the 2020 sale. She is powerful and easy fleshing like all the 4201 daughters.

## Lot 24 SAT UNIQUE 1165

BD: 3/23/2021 Tattoo: 1165 Reg #: 20193721

#Plattemere Weigh Up K360	#Sitz Upward 307R	BW	95
<b>Deer Valley Unique 5635</b>	#Barbara of Plattemere 337	ADJ 205	698
Sitz Henrietta Pride 643T	#Connealy Onward	WWR	100
	Sitz Henrietta Pride 81M	Proj. Sale Day Wt.	1138
#Soo Line Motive 9016	HF Kodiak 5R	Adj. Scrotal	32.3
<b>SAT Mabel 782</b>	TLA Beauty 5R	Dam's Ratio	3/97
SAT Mabel 404	#G A R Grid Maker		
	R R Mabel 4440		

CE	BW	WW	YW	Milk	SC	DOC	Marb.	REA	\$M
2	2.1	65	104	24	0.65	22	0.62	0.77	71

Another well balanced high-volume Unique. He is out of a nice young Motive daughter who was out of my favorite Gridmaker daughter that we had here. She was 10/97 for BW, 10/99 for WW, and had a calving interval of 11/365. When she left at 13 years of age, her feet were still perfect. Fertility, longevity, and foot quality. ¼ brother to Lot 23.

## Lot 23 SAT UNIQUE 1130

BD: 3/19/2021 Tattoo: 1130 Reg #: 20193674

#Plattemere Weigh Up K360	#Sitz Upward 307R	BW	91
<b>Deer Valley Unique 5635</b>	#Barbara of Plattemere 337	ADJ 205	751
Sitz Henrietta Pride 643T	#Connealy Onward	WWR	108
	Sitz Henrietta Pride 81M	Proj. Sale Day Wt.	1168
#Soo Line Motive 9016	HF Kodiak 5R	Adj. Scrotal	30.6
<b>SAT Princess 752</b>	TLA Beauty 5R	Dam's Ratio	3/106
SAT Princess 543	#Connealy Final Product		
	#Princess 550 BCBR		

CE	BW	WW	YW	Milk	SC	DOC	Marb.	REA	\$M
9	0	75	119	29	0.06	23	0.43	0.86	90

1130 is a deep-ribbed, big-middled bull. He will leave behind some excellent females as he descends from the Princess cow family and ranks in the top 2% for both \$M and \$W. His dam by Motive should soon be a Pathfinder with her 3/106 WW ratio. ¼ brother to Lot 24.

## Lot 25 SAT UNIQUE 1142

BD: 3/20/2021 Tattoo: 1142 Reg #: 20193729

#Plattemere Weigh Up K360	#Sitz Upward 307R	BW	81
<b>Deer Valley Unique 5635</b>	#Barbara of Plattemere 337	ADJ 205	651
Sitz Henrietta Pride 643T	#Connealy Onward	WWR	93
	Sitz Henrietta Pride 81M	Proj. Sale Day Wt.	1138
#Connealy Capitalist 028	#S A V Final Answer 0035	Adj. Scrotal	35.6
<b>SAT Rachel 686</b>	Prides Pita of Conanga 8821	Dam's Ratio	4/93
#SAT Rachel 349	#B/R New Day 454		
	SAT Rachel 505		

CE	BW	WW	YW	Milk	SC	DOC	Marb.	REA	\$M
13	-1.5	54	102	29	0.73	20	0.93	0.56	74

Calving ease Unique son backed by his dams BW ratio of 4/97. His granddam was a Pathfinder who was 3/108 before we unfortunately lost her. ¼ brother to lots 21 and 27.





## Lot 26 SAT UNIQUE 1179

BD: 3/27/2021 Tattoo: 1179 Reg #: 20193717

	BW	81
	ADJ 205	713
	WWR	102
	Proj. Sale Day Wt.	1093
	Adj. Scrotal	31.9
	Dam's Ratio	3/100

#Plattemere Weigh Up K360  
**Deer Valley Unique 5635**  
 Sitz Henrietta Pride 643T

#Sitz Upward 307R  
 #Barbara of Plattemere 337  
 #Connealy Onward  
 Sitz Henrietta Pride 81M  
 #Basin Payweight 006S  
 21AR O Lass 7017  
 #Sinclair Fortunate Son  
 R&D Blackbird 972-117

#Basin Payweight 1682  
**SAT Blackbird 723**  
 R&D Blackbird 117-402

CE	BW	WW	YW	Milk	SC	DOC	Marb.	REA	\$M
10	-0.7	73	122	27	-0.33	19	0.54	0.74	78

Another calving ease Unique son bred for balance. granddam has a WW ratio of 6/102, ¾ brother to Lot 19.

## Lot 27 SAT UNIQUE 1127

BD: 3/19/2021 Tattoo: 1127 Reg #: 20193726

	BW	57
	ADJ 205	618
	WWR	89
	Proj. Sale Day Wt.	1038
	Adj. Scrotal	31.1
	Dam's Ratio	4/93

#Plattemere Weigh Up K360  
**Deer Valley Unique 5635**  
 Sitz Henrietta Pride 643T

#Sitz Upward 307R  
 #Barbara of Plattemere 337  
 #Connealy Onward  
 Sitz Henrietta Pride 81M  
 #S A V Final Answer 0035  
 Prides Pita of Conanga 8821  
 #Rito 616 of 4B20 6807  
 Princess 3194 BCBR

#Connealy Capitalist 028  
**SAT Princess 675**  
 #Princess 550 BCBR

CE	BW	WW	YW	Milk	SC	DOC	Marb.	REA	\$M
17	-1.7	67	114	16	0.62	16	0.59	0.78	73

Sure-fire calving-ease bull here. He ranks in the top 1% of the breed for CED and CEM and had the lowest actual birth weight in the sale. His dam is 4/88 for BW ratio. His granddam was a Pathfinder that owned a WW ratio of 7/110; she was in our embryo program and recorded 35 progeny. ¾ brother to lots 21 and 25.

## Lot 28 SAT UNIQUE 199

BD: 3/16/2021 Tattoo: 199 Reg #: 20193670

	BW	74
	ADJ 205	580
	WWR	88
	Proj. Sale Day Wt.	1068
	Adj. Scrotal	35.5
	Dam's Ratio	2/91

#Plattemere Weigh Up K360  
**Deer Valley Unique 5635**  
 Sitz Henrietta Pride 643T

SAT Revival 210  
**SAT Mabel 840**  
 SAT Mabel 201

#Sitz Upward 307R  
 #Barbara of Plattemere 337  
 #Connealy Onward  
 Sitz Henrietta Pride 81M  
 #Coleman Regis 904  
 SAT Dixie 010  
 #Coleman Regis 904  
 SAT Mabel 604

CE	BW	WW	YW	Milk	SC	DOC	Marb.	REA	\$M
14	-1.8	66	115	30	1	20	0.44	0.63	73

Another sleep all night calving ease bull, backed by generations of low birth weights. His dam is 2/91 for her BW ratio and his granddam was 4/94 for BW, she also had a calving interval of 5/364. ¾ brother to Lot 20.







*Lot* **29**

*Lot* **29** **SAT RAINFALL 1133**

BD: 3/19/2021 Tattoo: 1133 Reg #: 20193891

#Coleman Charlo 0256  
**S A V Rainfall 6846**  
 S A V Blackcap May 4136

#Connealy Capitalist 028  
**SAT Pride 310**  
 Ox Bow Pride 450

#O C C Paxton 730P  
 Bohi Abigale 6014  
 #S A V 8180 Traveler 004  
 #S A V May 2397  
 #S A V Final Answer 0035  
 Prides Pita of Conanga 8821  
 Emulation 8190 B C A R  
 Ox Bow Pride 079

BW	87
ADJ 205	730
WWR	105
Proj. Sale Day Wt.	1178
Adj. Scrotal	36.1
Dam's Ratio	7/104

CE	BW	WW	YW	Milk	SC	DOC	Marb.	REA	\$M
3	2.1	62	105	21	0.85	12	0.51	0.47	79

The Rainfall x Capitalist cross worked very well for us. 1133's dam is our best Capitalist daughter when you combine phenotype and production. Not only is she 7/104 for WW, but she has a calving interval of 7/369 and has caught AI every year of her life. She has excellent feet and is flawless in her udder design. His granddam was 9/105 for WW ratio and 9/369 for calving interval. When she left our herd as a coming 12-year-old, her feet were still perfect. If you look up 1133's foot EPD's, he ranks in the top 5% of the breed or better for both. ¾ brother to Lot 30.

*reference sire*



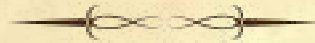
**13**  
Sons Sell

CE	BW	WW	YW	Milk	SC	Doc	Marb	REA	\$M
7	0.2	57	110	27	1.00	19	.65	.61	85

**SAV RAINFALL 6846**

Reg # 18578963

Coleman Charlo 0256 x SAV 8180 Traveler 004



Maternal strength at its best! Rainfall consistently sires deep-ribbed, easy-fleshing females that are moderate-framed with ideal udder structure. He is a low birthweight cowmaker that sires high volume cattle with extra width of base and dimension, flawless structure, and unmistakable profile and presence. He is a foot improver that makes problem free, low input cattle.





## Lot 30 SAT RAINFALL 1157

BD: 3/22/2021 Tattoo: 1157 Reg #: 20193885

#Coleman Charlo 0256	#O C C Paxton 730P	BW	99
<b>S A V Rainfall 6846</b>	Bohi Abigale 6014	ADJ	743
S A V Blackcap May 4136	#S A V 8180 Traveler 004	205	
	#S A V May 2397	WWR	107
#Connealy Capitalist 028	#S A V Final Answer 0035	Proj. Sale	1218
<b>SAT Blackbird 477</b>	Prides Pita of Conanga 8821	Day Wt.	
Blackbird 7226 BCBR	#G A R Predestined	Adj.	36.7
	Blackbird 2382 BCBR	Scrotal	
		Dam's	5/97
		Ratio	

CE	BW	WW	YW	Milk	SC	DOC	Marb.	REA	\$M
4	3.3	77	140	19	0.84	4	0.82	0.79	60

Another Rainfall x Capitalist; he is stout and powerful. His dam is one of our bigger made, more powerful Capitalist daughters. His Predestined granddam was 7/102 for WW ratio and 7/368 calving interval. ¼ brother to Lot 29.



## Lot 31 SAT RAINFALL 1150

BD: 3/21/2021 Tattoo: 1150 Reg #: 20193892

#Coleman Charlo 0256	#O C C Paxton 730P	BW	78
<b>S A V Rainfall 6846</b>	Bohi Abigale 6014	ADJ	709
S A V Blackcap May 4136	#S A V 8180 Traveler 004	205	
	#S A V May 2397	WWR	102
#Connealy Confidence 0100	Connealy Tobin	Proj. Sale	1108
<b>OSA CONFIDENCE FOCUS by X71</b>	Becka Gala of Conanga 8281	Day Wt.	
OSA In Focus of N717 X71	#Mytty In Focus	Adj.	35.7
	OSA Westwind 616 Zabrea	Scrotal	
		Dam's	6/102
		Ratio	

CE	BW	WW	YW	Milk	SC	DOC	Marb.	REA	\$M
10	-0.9	53	102	20	0.46	21	0.65	0.53	60

1150 possesses more muscle shape and base width than you would expect from a bull that is this level of calving ease. Not only is his dam 6/102 for WW, but also 6/88 for BW ratio with a calving interval of 7/366. His granddam was 7/97 for BW and 7/101 for WW.

## Lot 32 SAT RAINFALL 1145

BD: 3/21/2021 Tattoo: 1145 Reg #: 20193888

#Coleman Charlo 0256	#O C C Paxton 730P	BW	77
<b>S A V Rainfall 6846</b>	Bohi Abigale 6014	ADJ	707
S A V Blackcap May 4136	#S A V 8180 Traveler 004	205	
	#S A V May 2397	WWR	101
#S A V Final Answer 0035	#Sitz Traveler 8180	Proj. Sale	1058
<b>Ox Bow Eisa Evergreen 979</b>	S A V Emulous 8145	Day Wt.	
Ox Bow Eisa Evergreen 6147	Leachman Oxbow	Adj.	35.2
	Ox Bow Eisa Evergreen 291	Scrotal	
		Dam's	10/103
		Ratio	

CE	BW	WW	YW	Milk	SC	DOC	Marb.	REA	\$M
9	-0.8	52	93	30	0.41	12	0.24	0.53	84

This bull isn't the biggest one in the pen or may not be the first one you pick out, but he probably has as much potential to leave long lasting, fertile, good footed females as any bull in the offering. 1145 ranks in the top 3% or better for both foot EPD's, including top 1% and our best for the claw EPD, indicating his potential to sire progeny with symmetrical, even toes. He ranks top 5% for \$EN. His dam ratios 11/95 for BW and 11/103 for WW. She will be 13 years old this spring and she is the only cow we kept over 10 years of age due to the drought. Her feet are absolutely perfect, and she is easy fleshing with a great udder. She is also the granddam of lot 1. This is the first opportunity to buy a bull out of the 979 cow as her first 10 calves were all heifers. If you are looking for a low-birth-weight sire to produce moderate, low input, easy fleshing, fertile, long-lasting daughters with great feet and udders, consider this guy.

## Lot 33 SAT RAINFALL 1154

BD: 3/22/2021 Tattoo: 1154 Reg #: 20193884

#Coleman Charlo 0256	#O C C Paxton 730P	BW	75
<b>S A V Rainfall 6846</b>	Bohi Abigale 6014	ADJ	671
S A V Blackcap May 4136	#S A V 8180 Traveler 004	205	
	#S A V May 2397	WWR	102
#S Chisum 6175	S Alliance 3313	Proj. Sale	1092
<b>R&amp;D Bandy Lass 814/545</b>	#S Gloria 464	Day Wt.	
R&D Bandy LASS-515	#Woodhill Foresight	Adj.	36.2
	#R&D Miss Lass	Scrotal	
		Dam's	5/105
		Ratio	

CE	BW	WW	YW	Milk	SC	DOC	Marb.	REA	\$M
11	-1.8	51	85	39	0.76	22	0.28	0.33	91

Sure bet calving ease bull backed by a 75-pound birth weight, dam that is 5/90 for BW to go with her 5/105 WW ratio, and a granddam that was 7/104 for WW. 1154 possesses the highest milk EPD in our offering. This bull will moderate mature size and add milking ability to his daughters.



## Lot 34 SAT RAINFALL 1131

BD: 3/19/2021 Tattoo: 1131 Reg #: 20193896

#Coleman Charlo 0256	#O C C Paxton 730P	BW	81
<b>S A V Rainfall 6846</b>	Bohi Abigale 6014	ADJ 205	674
S A V Blackcap May 4136	#S A V 8180 Traveler 004	WWR	102
	#S A V May 2397	Proj. Sale Day Wt.	1058
#Hoover Dam	#SydGen C C & 7	Adj. Scrotal	35.6
<b>ICC Harmony 1824</b>	#Erica of Ellston C124	Dam's Ratio	8/100
ER Harmony K256	#S A F Neutron		
	Spring Cove Harmony 6807 52		

CE	BW	WW	YW	Milk	SC	DOC	Marb.	REA	\$M
12	-1	54	101	22	0.31	18	0.68	0.79	64

Another sure-fire calving ease bull out a smooth made, angular Hoover Dam daughter. 1131's calving ease projection is backed by his dam's 7/94 BW ratio, she also has a calving interval of 8/367. ¾ brother to Lot 36.

## Lot 36 SAT RAINFALL 1120

BD: 3/18/2021 Tattoo: 1120 Reg #: 20193886

#Coleman Charlo 0256	#O C C Paxton 730P	BW	63
<b>S A V Rainfall 6846</b>	Bohi Abigale 6014	ADJ 205	602
S A V Blackcap May 4136	#S A V 8180 Traveler 004	WWR	86
	#S A V May 2397	Proj. Sale Day Wt.	1028
#Hoover Dam	#SydGen C C & 7	Adj. Scrotal	33.1
<b>R&amp;D Heather Bloom 126-309</b>	#Erica of Ellston C124	Dam's Ratio	6/94
R&D Heather Bloom 600-126	#S A V 004 Density 4336		
	R&D Heather Bloom 867N		

CE	BW	WW	YW	Milk	SC	DOC	Marb.	REA	\$M
15	-4.4	36	75	34	0.66	27	1.28	0.2	82

Another can't miss calving ease Rainfall. He owns the lowest BW EPD in the sale, but when you see him, you would never guess he is -4.4 BW. He has an eye appealing profile and is deep ribbed. His dam by Hoover Dam is 6/91 for BW. If you are looking to add end product value, he is our high marbling bull in the offering, ranking in the top 3% of the breed. In fact, he is one of only 4 bulls in the breed with his combination of BW and Marb EPD. ¾ brother to Lot 34.



## Lot 35 SAT RAINFALL 1114

BD: 3/17/2021 Tattoo: 1114 Reg #: 20193894

#Coleman Charlo 0256	#O C C Paxton 730P	BW	81
<b>S A V Rainfall 6846</b>	Bohi Abigale 6014	ADJ 205	644
S A V Blackcap May 4136	#S A V 8180 Traveler 004	WWR	92
	#S A V May 2397	Proj. Sale Day Wt.	1073
#S A V Bismarck 5682	#G A R Grid Maker	Adj. Scrotal	36.5
<b>ICC Flossie 2944</b>	S A V Abigale 0451	Dam's Ratio	5/99
Baldrige Flossie 367	#Bon View Emulation Ext 473		
	Baldrige Flossie 65		

CE	BW	WW	YW	Milk	SC	DOC	Marb.	REA	\$M
7	-1.3	56	103	30	1.56	13	0.62	0.4	83

Calving ease Rainfall whose Bismarck x EXT 473 dam has a BW ratio of 5/96 along with a 358-day calving interval. She is easy doing with breed character and superb foot and udder quality.

## Lot 37 SAT RAINFALL 1153

BD: 3/22/2021 Tattoo: 1153 Reg #: 20193887

#Coleman Charlo 0256	#O C C Paxton 730P	BW	84
<b>S A V Rainfall 6846</b>	Bohi Abigale 6014	ADJ 205	703
S A V Blackcap May 4136	#S A V 8180 Traveler 004	WWR	101
	#S A V May 2397	Proj. Sale Day Wt.	1133
#GDAR Game Day 449	#Boyd New Day 8005	Adj. Scrotal	35.7
<b>R&amp;D Bonanza-164-304</b>	#G D A R Miss Wix 474	Dam's Ratio	7/100
R&D Miss Bonanza 236-164	Landmark Admiral 118		
	#B A A Eisa 236A		

CE	BW	WW	YW	Milk	SC	DOC	Marb.	REA	\$M
8	0.2	55	106	32	0.26	4	0.72	0.42	65

Dam is 7/96 for BW. ¾ brother to Lot 38.

## Lot 38 SAT RAINFALL 1146

BD: 3/21/2021 Tattoo: 1146 Reg #: 20193888

#Coleman Charlo 0256	#O C C Paxton 730P	BW	79
<b>S A V Rainfall 6846</b>	Bohi Abigale 6014	ADJ 205	689
S A V Blackcap May 4136	#S A V 8180 Traveler 004	WWR	99
	#S A V May 2397	Proj. Sale Day Wt.	1113
#GDAR Game Day 449	#Boyd New Day 8005	Adj. Scrotal	36.7
<b>R&amp;D Blackbird 117-303</b>	#G D A R Miss Wix 474	Dam's Ratio	6/103
R&D Blackbird 972-117	#Sinclair Extra 4X13		
	R&D Blackbird 6867-972		

CE	BW	WW	YW	Milk	SC	DOC	Marb.	REA	\$M
8	0.6	52	95	36	0.52	0	0.32	0.15	82

Calving ease Rainfall, which most of them are. His dam is 6/92 BW. ¾ brother lot 37.



## Lot 39 SAT RAINFALL 1158

BD: 3/22/2021 Tattoo: 1158 Reg #: 20193883

#Coleman Charlo 0256	#O C C Paxton 730P	BW	98
<b>S A V Rainfall 6846</b>	Bohi Abigale 6014	ADJ 205	651
S A V Blackcap May 4136	#S A V 8180 Traveler 004	WWR	93
	#S A V May 2397	Proj. Sale Day Wt.	1083
#Koupal Juneau 797	#O C C Juneau 807J	Adj. Scrotal	35.7
<b>SAT Lass 6206</b>	Koupals Elba 187	Dam's Ratio	4/100
R&D Lass 911-104	#GDAR Game Day 449		
	R&D Lass 2999-911		

CE	BW	WW	YW	Milk	SC	DOC	Marb.	REA	\$M
-3	4.9	76	139	25	1.52	9	0.71	0.59	60

1158's dam is a full sister to Juneau 706, our high selling bull in 2018. We used him in our AI program, and he did a great job leaving behind tremendous daughters and bulls that commercial cattlemen appreciated. His granddam was 8/104 for WW.

## Lot 40 SAT RAINFALL 164

BD: 3/11/2021 Tattoo: 164 Reg #: 20193734

#Coleman Charlo 0256	#O C C Paxton 730P	BW	74
<b>S A V Rainfall 6846</b>	Bohi Abigale 6014	ADJ 205	615
S A V Blackcap May 4136	#S A V 8180 Traveler 004	WWR	106
	#S A V May 2397	Proj. Sale Day Wt.	1003
SAT Juneau 706	#Koupal Juneau 797	Adj. Scrotal	32.3
<b>SAT Britt 9106</b>	R&D Lass 911-104	Dam's Ratio	1/106
SAT Britt 649	#Connealy Capitalist 028		
	Brusett Britt Q719		

CE	BW	WW	YW	Milk	SC	DOC	Marb.	REA	\$M
9	0	70	129	32	0.51	14	0.28	0.72	75

This bulls dam is a moderate, easy fleshing Juneau 706 daughter that did well on her first calf. His Capitalist granddam is 4/87 for BW.

## Lot 41 SAT RAINFALL 1159

BD: 3/22/2021 Tattoo: 1159 Reg #: 20193893

#Coleman Charlo 0256	#O C C Paxton 730P	BW	87
<b>S A V Rainfall 6846</b>	Bohi Abigale 6014	ADJ 205	674
S A V Blackcap May 4136	#S A V 8180 Traveler 004	WWR	97
	#S A V May 2397	Proj. Sale Day Wt.	1078
#S A V 004 Density 4336	#S A V 8180 Traveler 004	Adj. Scrotal	33.7
<b>R&amp;D Pamela 219-5330</b>	S A V May 7238	Dam's Ratio	8/103
#Basin Pamela 5330	A A R Rito 2177		
	#Basin Pamela 315E		

CE	BW	WW	YW	Milk	SC	DOC	Marb.	REA	\$M
8	-1	35	65	30	1.09	5	0.4	0.51	68

Out of a good old Density daughter. We have really liked our Density's, easy-doing cows that raise good calves and last.







*Lot* **42**

## SAT RESOURCE 175

BD: 3/13/2021 Tattoo: 175 Reg #: 20224637

#S A V Resource 1441  
**Coleman Resource 918**  
 #Coleman Abigale 686

#Soo Line Motive 9016  
**SAT Mabel 455**  
 SAT Mabel 227

Rito 707 of Ideal 3407 7075  
 S A V Blackcap May 4136  
 #Connealy Onward  
 #Coleman Abigale 0277  
 HF Kodiak 5R  
 TLA Beauty 5R  
 #Coleman Regis 904  
 SAT Mabel 004

BW	88
ADJ 205	717
WWR	103
Proj. Sale Day Wt.	1168
Adj. Scrotal	40.9
Dam's Ratio	6/98

CE	BW	WW	YW	Milk	SC	DOC	Marb.	REA	\$M
7	1.6	66	116	17	1.4	5	0.41	0.76	41

Stout made, thick bull with big testicles, out of a beautiful Motive daughter. His dam exemplifies what we love about the Motive cows, easy fleshing, deep bodied, and fertile. She has a calving interval of 6/368. ¾ brother to Lot 51.



Left: Abigale 686  
 Dam of Coleman Resource 918



Right: Abigale 0277  
 Granddam of Coleman Resource 918

*reference sire*



## COLEMAN RESOURCE 918

Reg # 19554416

SAV Resource 1441 x Connealy Onward

918 was our selection at the 2020 Coleman Angus sale. He is powerful, big-middled, and exhibits tremendous length of body. His dam is a Pathfinder at Colemans, with a WW ratio of 4/112. She is good uddered, has great feet, extremely long bodied, and incredibly good in her front third. His grand dam is a full sister to Charlo. His maternal sister sold for \$34,000 in their 2020 female sale. We felt his first calf crop here was very consistent, and his daughters have the look of making some high-volume females.

CE	BW	WW	YW	Milk	SC	Doc	Marb	REA	\$M
1	4.8	81	148	25	1.12	19	.23	1.01	62



## Lot 43 SAT RESOURCE 192

BD: 3/15/2021 Tattoo: 192 Reg #: 20224628

#S A V Resource 1441  
**Coleman Resource 918**  
 #Coleman Abigale 686  
  
 #GDAR Game Day 449  
**R&D Blackbird 564/972**  
 R&D Blackbird 6867-972

Rito 707 of Ideal 3407 7075  
 S A V Blackcap May 4136  
 #Connealy Onward  
 #Coleman Abigale 0277  
 #Boyd New Day 8005  
 #G D A R Miss Wix 474  
 #Three Trees Rock On 0059  
 Landmark Blackbird 6867

BW	95
ADJ 205	726
WWR	104
Proj. Sale Day Wt.	1158
Adj. Scrotal	35.5
Dam's Ratio	5/99

CE	BW	WW	YW	Milk	SC	DOC	Marb.	REA	\$M
0	4.6	72	126	21	1.25	15	0.73	0.77	63

Well balanced cow bull that will sire heavy steers and efficient, fertile daughters. Granddam was 5/97 BW and 5/106 WW.



## Lot 44 SAT RESOURCE 1111

BD: 3/17/2021 Tattoo: 1111 Reg #: 20224634

#S A V Resource 1441  
**Coleman Resource 918**  
 #Coleman Abigale 686  
  
 Mc Cumber Fortunate 367  
**R&D Blackbird 302/555**  
 R&D Blackbird 137-302

Rito 707 of Ideal 3407 7075  
 S A V Blackcap May 4136  
 #Connealy Onward  
 #Coleman Abigale 0277  
 #Sinclair Fortunate Son  
 Rosetta 7174 of Mc Cumber  
 #GDAR Game Day 449  
 R&D Black Bird 528-137

BW	94
ADJ 205	741
WWR	106
Proj. Sale Day Wt.	1233
Adj. Scrotal	34
Dam's Ratio	5/102

CE	BW	WW	YW	Milk	SC	DOC	Marb.	REA	\$M
3	2.5	67	126	27	1.19	6	0.31	0.73	51

Big, growthy cow bull that will add pounds and performance.



## Lot 45 SAT RESOURCE 171

BD: 3/12/2021 Tattoo: 171 Reg #: 20224627

#S A V Resource 1441  
**Coleman Resource 918**  
 #Coleman Abigale 686  
  
 Ox Bow Ozzie 3233  
**SAT Pinny 7216**  
 SAT Pinny 441

Rito 707 of Ideal 3407 7075  
 S A V Blackcap May 4136  
 #Connealy Onward  
 #Coleman Abigale 0277  
 #GDAR Game Day 449  
 Ox Bow Blackbird 1139  
 #Soo Line Motive 9016  
 SAT Pinny 912

BW	90
ADJ 205	683
WWR	98
Proj. Sale Day Wt.	1163
Adj. Scrotal	34.8
Dam's Ratio	3/95

CE	BW	WW	YW	Milk	SC	DOC	Marb.	REA	\$M
7	1.1	71	131	23	0.28	5	0.24	0.82	63

Cow bull whose granddam is another high capacity, easy doing Motive that is another favorite to visitors.

## Lot 46 SAT RESOURCE 195

BD: 3/15/2021 Tattoo: 195 Reg #: 20224632

#S A V Resource 1441  
**Coleman Resource 918**  
 #Coleman Abigale 686  
  
 #Basin Payweight 1682  
**SAT Mabel 660**  
 SAT Mabel 012

Rito 707 of Ideal 3407 7075  
 S A V Blackcap May 4136  
 #Connealy Onward  
 #Coleman Abigale 0277  
 #Basin Payweight 0065  
 21AR O Lass 7017  
 #B A R Ext Traveler 205  
 R R Mabel 4440

BW	78
ADJ 205	681
WWR	98
Proj. Sale Day Wt.	1103
Adj. Scrotal	35
Dam's Ratio	4/100

CE	BW	WW	YW	Milk	SC	DOC	Marb.	REA	\$M
10	0.5	62	104	26	1.06	8	0.14	0.82	85

Calving ease 918 that is supported by his dams BW ratio of 4/86. His granddam was BAR EXT out of our foundation Mabel donor that had a BW ratio of 9/94 and a calving interval of 9/365.





Lot 47

## SAT RESOURCE 190

BD: 3/14/2021 Tattoo: 190 Reg #: 20224642

#S A V Resource 1441  
**Coleman Resource 918**  
 #Coleman Abigale 686  
 #Connealy Capitalist 028  
**SAT Rita 320**  
 #Rita 1116 of 9Z13 Rito 616

Rito 707 of Ideal 3407 7075  
 S A V Blackcap May 4136  
 #Connealy Onward  
 #Coleman Abigale 0277  
 #S A V Final Answer 0035  
 Prides Pita of Conanga 8821  
 #Rito 616 of 4B20 6807  
 Rita 9Z13 of 7X24 814Z

BW	72
ADJ 205	647
WWR	93
Proj. Sale Day Wt.	1103
Adj. Scrotal	33.9
Dam's Ratio	7/100

CE	BW	WW	YW	Milk	SC	DOC	Marb.	REA	\$M
9	0.9	65	123	31	0.83	10	0.51	0.59	52

Another calving ease 918 out of angular, good uddered Capitalist daughter that is as proven for low birth weight as you can get. She has a BW ratio of 7/91 and calving interval of 7/369, having caught AI every year of her life. 190's granddam was a Pathfinder that was 6/99 BW and 6/102 WW and served in out ET program recording 41 progeny. 3/4 brother to Lot 49.



Lot 48

## SAT RESOURCE 1129

BD: 3/19/2021 Tattoo: 1129 Reg #: 20224640

#S A V Resource 1441  
**Coleman Resource 918**  
 #Coleman Abigale 686  
 44 Changeup  
**SAT Rachel 301**  
 SAT Rachel 505

Rito 707 of Ideal 3407 7075  
 S A V Blackcap May 4136  
 #Connealy Onward  
 #Coleman Abigale 0277  
 #S S Objective T510 0T26  
 SQ 133P of 209M Exacto  
 #Rito 112 of 2536 Rito 616  
 G D A R Rachel 3284

BW	115
ADJ 205	685
WWR	98
Proj. Sale Day Wt.	1163
Adj. Scrotal	34.6
Dam's Ratio	7/101

CE	BW	WW	YW	Milk	SC	DOC	Marb.	REA	\$M
-6	6.9	67	126	33	0.08	16	0.37	0.55	49

Powerful cow bull that will add some pounds if you can handle his birth weight. Granddam was 6/104 for WW.

Lot 49

## SAT RESOURCE 158

BD: 3/10/2021 Tattoo: 158 Reg #: 20224631

#S A V Resource 1441  
**Coleman Resource 918**  
 #Coleman Abigale 686  
 #Connealy Capitalist 028  
**SAT Princess 6111**  
 #Princess 550 BCBR

Rito 707 of Ideal 3407 7075  
 S A V Blackcap May 4136  
 #Connealy Onward  
 #Coleman Abigale 0277  
 #S A V Final Answer 0035  
 Prides Pita of Conanga 8821  
 #Rito 616 of 4B20 6807  
 Princess 3194 BCBR

BW	99
ADJ 205	667
WWR	96
Proj. Sale Day Wt.	1098
Adj. Scrotal	32.3
Dam's Ratio	4/90

CE	BW	WW	YW	Milk	SC	DOC	Marb.	REA	\$M
2	2.8	81	133	11	0.99	20	0.26	0.72	62

Dam is a high volume, easy keeping Capitalist daughter that visitors always find. Granddam was a Pathfinder with 7/110 for WW ratio who had a perfect udder and immaculate foot quality, she was in our ET program and records 35 progeny. 3/4 brother to Lot 47.





## Lot 50 SAT RESOURCE 1117

BD: 3/17/2021 Tattoo: 1117 Reg #: 20192326

#S A V Resource 1441	Rito 707 of Ideal 3407 7075	BW	90
<b>Coleman Resource 918</b>	S A V Blackcap May 4136	ADJ 205	650
#Coleman Abigale 686	#Connealy Onward	WWR	93
	#Coleman Abigale 0277	Proj. Sale Day Wt.	1058
#Coleman Regis 904	#S A V Final Answer 0035	Adj. Scrotal	34
<b>SAT Mabel 442</b>	Coleman Donna 714	Dam's Ratio	6/92
SAT Mabel 604	#Rito 112 of 2536 Rito 616		
	SAT Mabel 406		

CE	BW	WW	YW	Milk	SC	DOC	Marb.	REA	\$M
5	1.7	58	108	30	0.45	27	0.86	0.54	59

Dam has a calving interval of 6/366 and granddam was 12/105 WW and 12/362 calving interval.

## Lot 51 SAT RESOURCE 1186

BD: 3/29/2021 Tattoo: 1186 Reg #: 20224626

#S A V Resource 1441	Rito 707 of Ideal 3407 7075	BW	85
<b>Coleman Resource 918</b>	S A V Blackcap May 4136	ADJ 205	644
#Coleman Abigale 686	#Connealy Onward	WWR	92
	#Coleman Abigale 0277	Proj. Sale Day Wt.	1043
#Soo Line Motive 9016	HF Kodiak 5R	Adj. Scrotal	33
<b>SAT Blackbird 760</b>	TLA Beauty 5R	Dam's Ratio	2/89
#Ox Bow Blackbird 930	#Sitz Rainmaker 9723		
	Ox Bow Blackbird 7123		

CE	BW	WW	YW	Milk	SC	DOC	Marb.	REA	\$M
8	1.7	58	109	21	0.41	11	0.03	1.02	42

Pathfinder granddam was also the granddam of the ST Genetics bull Ox Bow Ozzie. She owned a WW ratio of 6/106 and a calving interval of 6/366. ¼ brother to Lot 42.

## Lot 52 SAT RESOURCE 1126

BD: 3/18/2021 Tattoo: 1126 Reg #: 20224630

#S A V Resource 1441	Rito 707 of Ideal 3407 7075	BW	104
<b>Coleman Resource 918</b>	S A V Blackcap May 4136	ADJ 205	758
#Coleman Abigale 686	#Connealy Onward	WWR	109
	#Coleman Abigale 0277	Proj. Sale Day Wt.	1218
#Connealy Confidence 0100	Connealy Tobin	Adj. Scrotal	38.1
<b>SAT Eola 664</b>	Becka Gala of Conanga 8281	Dam's Ratio	4/96
OSA SolutionMustang of U71	#S A V Mustang 9134		
	#OSA Ms Solution U71		

CE	BW	WW	YW	Milk	SC	DOC	Marb.	REA	\$M
4	2.8	64	119	34	1.27	4	0.12	0.79	65

Grand dam WW ratio of 3/102.

## Lot 53 SAT RESOURCE 1121

BD: 3/19/2021 Tattoo: 1121 Reg #: 20224624

#S A V Resource 1441	Rito 707 of Ideal 3407 7075	BW	94
<b>Coleman Resource 918</b>	S A V Blackcap May 4136	ADJ 205	628
#Coleman Abigale 686	#Connealy Onward	WWR	90
	#Coleman Abigale 0277	Proj. Sale Day Wt.	1028
S Fortunate 4160	#Sinclair Fortunate Son	Adj. Scrotal	33.6
<b>SAT Barbara 7249</b>	S Camilla 6144	Dam's Ratio	3/96
#SAT Barbara 414	#Connealy Confidence 0100		
	#OSA FocusMustang of W903		

CE	BW	WW	YW	Milk	SC	DOC	Marb.	REA	\$M
4	3.6	57	99	26	0.43	22	0.3	0.46	85

Pathfinder granddam is one of our favorite cows, possessing a BW ratio of 5/87 and a WW ratio of 4/108.







Lot 54

## SAT BRAVO 136

BD: 3/8/2021 Tattoo: 136 Reg #: 20195207

#Coleman Charlo 0256  
**Coleman Bravo 6313**  
 Coleman Donna 714

#O C C Paxton 730P  
 Bohi Abigale 6014  
 #Connealy Onward  
 Coleman Donna 386  
 #Koupal Juneau 797  
 R&D Lass 911-104  
 Ellingson Versatile  
 #BAR Miss Regis 3125

SAT Juneau 706  
**SAT Blackcap 941**  
 SAT Blackcap 7142

BW	80
ADJ 205	641
WWR	110
Proj. Sale Day Wt.	1093
Adj. Scrotal	34.7
Dam's Ratio	1/110

CE	BW	WW	YW	Milk	SC	DOC	Marb.	REA	\$M
13	0.5	66	114	28	1.41	23	0.53	0.4	93

Calving ease Bravo ranking in the top 2% for \$M. Calving ease is backed by granddams BW ratio of 3/90. His dam is one of the first Juneau 706's to calve and they are off to a good start, 8 of them had an average weaning ratio of 103. ¾ brother to Lot 57.



reference sire



## COLEMAN BRAVO 6313

Reg # 18734838

Coleman Charlo 0256 x Connealy Onward

Bravo's progeny are gentle, sound, athletic, and have good bone for a low birth weight bull. They have tremendous rib shape, smooth shoulders, are deep flanked, and tight sheathed. The reports on his daughters are that they are very complete, fertile females with perfect udders.

CE	BW	WW	YW	Milk	SC	Doc	Marb	REA	\$M
16	-0.5	55	101	21	0.89	30	0.11	0.39	89





## Lot 55 SAT BRAVO 137

BD: 3/8/2021 Tattoo: 137 Reg #: 20195203

#Coleman Charlo 0256	#O C C Paxton 730P	BW	75
<b>Coleman Bravo 6313</b>	Bohi Abigale 6014	ADJ 205	596
Coleman Donna 714	#Connealy Onward	WWR	102
Tehama Tahoe B767	Coleman Donna 386	Proj. Sale Day Wt.	1073
<b>SAT Eola 929</b>	Tehama Upward Y238	Adj. Scrotal	36.7
SAT Eola 7140	Tehama Mary Blackbird Y684	Dam's Ratio	1/102
	Ellingson Versatile		
	OSA CONFIDENCE FOCUS by X		

CE	BW	WW	YW	Milk	SC	DOC	Marb.	REA	\$M
14	-0.4	76	130	26	1.49	20	0.06	0.67	99

Low birth weight Bravo whose Versatile granddam is off to a great start with ratios of 3/98 for BW and 3/109 for WW. ¾ brother to lots 61 and 62.

## Lot 56 SAT BRAVO 110

BD: 3/3/2021 Tattoo: 110 Reg #: 20224979

#Coleman Charlo 0256	#O C C Paxton 730P	BW	69
<b>Coleman Bravo 6313</b>	Bohi Abigale 6014	ADJ 205	615
Coleman Donna 714	#Connealy Onward	WWR	100
Connealy Maternal Made	Coleman Donna 386	Proj. Sale Day Wt.	1053
<b>SAT Princess 971</b>	Connealy Niobrara 5451	Adj. Scrotal	36
SAT Princess 374	#Ebony Lilly of Conanga 167T	Dam's Ratio	1/100
	BA Ten X 0361		
	#Princess 5533 BCBR		

CE	BW	WW	YW	Milk	SC	DOC	Marb.	REA	\$M
7	2.2	50	89	16	0.9	28	0.19	0.11	92

Even though this bulls BW EPD is 2.2, I would not hesitate to use him on heifers. With his 69-pound actual birth weight, and his granddam having a BW ratio of 7/92, I'd feel confident in his calving ease. 110 is in the top 2% of the breed for \$M. He is the top \$EN bull in our offering ranking in the top 2%. Use this bull to make moderate framed, efficient, low input daughters.

## Lot 58 SAT BRAVO 103

BD: 3/1/2021 Tattoo: 103 Reg #: 20195154

#Coleman Charlo 0256	#O C C Paxton 730P	BW	77
<b>Coleman Bravo 6313</b>	Bohi Abigale 6014	ADJ 205	605
Coleman Donna 714	#Connealy Onward	WWR	104
Marcys Right Time 547	Coleman Donna 386	Proj. Sale Day Wt.	1043
<b>SAT Erica 9181</b>	#Leachman Right Time	Adj. Scrotal	32.9
SAT Erica 5125	#Marcys Erica 866	Dam's Ratio	1/104
	SSAF Balboa 230		
	Marcys Erica 29		

CE	BW	WW	YW	Milk	SC	DOC	Marb.	REA	\$M
13	-1	62	111	32	1.59	16	0.37	0.58	94

Another sure-bet calving ease Bravo son who ranks in the top 1% for \$M.



## Lot 57 SAT BRAVO 191

BD: 3/15/2021 Tattoo: 191 Reg #: 20195208

#Coleman Charlo 0256	#O C C Paxton 730P	BW	90
<b>Coleman Bravo 6313</b>	Bohi Abigale 6014	ADJ 205	618
Coleman Donna 714	#Connealy Onward	WWR	106
SAT Juneau 706	Coleman Donna 386	Proj. Sale Day Wt.	1053
<b>SAT Eola 946</b>	#Koupal Juneau 797	Adj. Scrotal	35
SAT Eola 784	R&D Lass 911-104	Dam's Ratio	1/106
	Brooking Prosecutor 222		
	Osa Mustang Krugger of U17		

CE	BW	WW	YW	Milk	SC	DOC	Marb.	REA	\$M
6	2.1	69	130	33	1.58	30	0.2	0.7	90

Really gentle bull. Dam is a moderate, high-capacity Juneau 706 daughter out of lot 4's dam, who ratios 3/105 for BW. Outstanding maternal pedigree here, should make some tremendous daughters. ¾ brother to Lot 54.

# S T

Join us **FRIDAY,**  
**FEB. 11, 2022**  
**1:30 p.m.**

Join us in person or online via [www.DVAuction.com](http://www.DVAuction.com)



Lot 59

## SAT BRAVO 139

BD: 3/9/2021 Tattoo: 139 Reg #: 20195200

#Coleman Charlo 0256	#O C C Paxton 730P	BW	66
<b>Coleman Bravo 6313</b>	Bohi Abigale 6014	ADJ 205	566
Coleman Donna 714	#Connealy Onward	WWR	97
Werner Flat Top 4136	Coleman Donna 386	Proj. Sale Day Wt.	1028
<b>SAT Bonanza 9134</b>	#Connealy Black Granite	Adj. Scrotal	32.2
R&D Bonanza-164-304	#Werner Lady 0304	Dam's Ratio	1/97
	#GDAR Game Day 449		
	R&D Miss Bonanza 236-164		

CE	BW	WW	YW	Milk	SC	DOC	Marb.	REA	\$M
17	-2.6	51	91	38	1.01	23	0.14	0.7	87

No questions asked, this guy will be calving ease. 66-pound birth weight, top 1% CED, top 2% BW, and high for \$EN. His dam is a Flat Top, and they all pass on low birth weight, and his granddam was 7/96 for birth weight along with 7/100 for WW. 3/4 brother to Lot 60.

Lot 61

## SAT BRAVO 106

BD: 3/2/2021 Tattoo: 106 Reg #: 20195204

#Coleman Charlo 0256	#O C C Paxton 730P	BW	82
<b>Coleman Bravo 6313</b>	Bohi Abigale 6014	ADJ 205	575
Coleman Donna 714	#Connealy Onward	WWR	99
Tehama Tahoe B767	Coleman Donna 386	Proj. Sale Day Wt.	993
<b>SAT Primrose 913</b>	Tehama Upward Y238	Adj. Scrotal	33
SAT Primrose 7100	Tehama Mary Blackbird Y684	Dam's Ratio	1/99
	Brooking Prosecutor 222		
	#Primrose 6911 BCBR		

CE	BW	WW	YW	Milk	SC	DOC	Marb.	REA	\$M
8	1.8	74	124	35	1.07	22	0.27	0.9	113

Top \$M bull in the sale ranking well into the top 1% of the breed. Grandam should soon be a Pathfinder with a WW ratio of 3/107 and has caught AI every year. 3/4 brother to lots 55 and 62.

Lot 60

## SAT BRAVO 107

BD: 3/2/2021 Tattoo: 107 Reg #: 20195199

#Coleman Charlo 0256	#O C C Paxton 730P	BW	68
<b>Coleman Bravo 6313</b>	Bohi Abigale 6014	ADJ 205	569
Coleman Donna 714	#Connealy Onward	WWR	98
Werner Flat Top 4136	Coleman Donna 386	Proj. Sale Day Wt.	1018
<b>SAT Britt 9119</b>	#Connealy Black Granite	Adj. Scrotal	32.5
Brusett Britt Q719	#Werner Lady 0304	Dam's Ratio	1/98
	#Woodhill Foresight		
	Brusett Britt 206		

CE	BW	WW	YW	Milk	SC	DOC	Marb.	REA	\$M
16	-1.3	63	105	26	0.49	21	0.25	0.27	80

Very similar to the last lot. His granddam was a model of fertility and longevity. She was 11/94 for BW, 11/101 for WW, and 11/366 for calving interval. 3/4 brother to Lot 59.

Lot 62

## SAT BRAVO 126

BD: 3/7/2021 Tattoo: 126 Reg #: 20195202

#Coleman Charlo 0256	#O C C Paxton 730P	BW	92
<b>Coleman Bravo 6313</b>	Bohi Abigale 6014	ADJ 205	746
Coleman Donna 714	#Connealy Onward	WWR	128
Tehama Tahoe B767	Coleman Donna 386	Proj. Sale Day Wt.	1183
<b>SAT Blackbird 924</b>	Tehama Upward Y238	Adj. Scrotal	35.7
SAT Blackbird 7161	Tehama Mary Blackbird Y684	Dam's Ratio	1/128
	R&D Juneau 5031		
	R&D Blackbird 210-927		

CE	BW	WW	YW	Milk	SC	DOC	Marb.	REA	\$M
5	2.7	86	147	26	1.39	28	0.16	0.82	90

Largest framed, highest performing Bravo. His granddam will make Pathfinder as she is 3/111 and has caught AI every year. 3/4 brother to lots 55 and 61.





**Lot 63 SAT IMAGE MAKER 1246**

BD: 4/19/2021 Tattoo: 1246 Reg #: 20192341

#H A Image Maker 0415  
**Marcys 19 Image Maker 16-9**  
 Marcys 13 Ethelda E 15-3

#Hero 6267 of R R 2418  
 H A Rito Blackcap 9038  
 #Sitz Upward 307R  
 #Marcys 01 Ethelda E 82-1  
 #S A V Resource 1441  
 SAV Blackclass 124 EA  
 #Soo Line Motive 9016  
 SAT Mabel 227

Ellingson Versatile  
**SAT Mabel 7200**  
 SAT Mabel 455

BW	98
ADJ 205	818
WWR	117
Proj. Sale Day Wt.	1093
Adj. Scrotal	36.2
Dam's Ratio	3/106

CE	BW	WW	YW	Milk	SC	DOC	Marb.	REA	SM
4	2.2	64	117	31	0.21	5	0.32	0.74	77

Don't overlook this bull just because he is the youngest in the sale. He recorded the highest 205-day weight in the entire calf crop at 818 pounds. This calf is moderate, stout, and loaded with breed character. His granddam is the dam of lot 42, our leadoff 918. His dam raised our 2nd high selling bull in 2020 and our 3rd high selling bull in 2021. 1246 is very good on his feet and has foot EPD's to match, including the top Foot Angle EPD in our offering, indicating proper angle at the pastern with appropriate toe length and heel depth.



**Lot 64 SAT IMAGE MAKER 1178**

BD: 3/27/2021 Tattoo: 1178 Reg #: 20192329

#H A Image Maker 0415  
**Marcys 19 Image Maker 16-9**  
 Marcys 13 Ethelda E 15-3

#Hero 6267 of R R 2418  
 H A Rito Blackcap 9038  
 #Sitz Upward 307R  
 #Marcys 01 Ethelda E 82-1  
 #Connealy Confidence 0100  
 D 50 Claire X0258  
 #Connealy Capitalist 028  
 #Rita 1116 of 9Z13 Rito 616

D 0100 Confidence Z2278  
**SAT Rita 565**  
 SAT Rita 304

BW	85
ADJ 205	802
WWR	115
Proj. Sale Day Wt.	1193
Adj. Scrotal	33.4
Dam's Ratio	5/106

CE	BW	WW	YW	Milk	SC	DOC	Marb.	REA	SM
5	1.3	78	126	27	0.59	14	0.47	0.52	83

2nd heaviest 205-day weight in the sale at 802. 1178's dam is doing a tremendous job with a 5/95 BW ratio to go with her 5/106 WW ratio.

**MARCYS 19 IMAGE MAKER 16-9**

Reg # 19475711  
 H A Image Maker 0415 x Sitz Upward 307R

**4**  
 Sons Sell

*reference sire*

CE	BW	WW	YW	Milk	SC	Doc	Marb.	REA	SM
5	2.2	85	139	29	0.73	11	0.62	0.60	74

This is a bull we bought from Marcy Cattle Company in Nebraska in 2020. We appreciate the Image Maker females and their foot quality. His dam was Marcy's high selling cow in their 2017 female sale. We used him to cleanup after AI as a yearling, so we only got 8 calves, but their average weaning ratio was 108! Normally these herd bull sired calves would go in the 2-year-old sale, but we felt they just fit in better with the yearling sale bulls. Some high performing calves with real growth and maternal potential.





**Lot 65 SAT IMAGE MAKER 1119**      **Lot 66 SAT IMAGE MAKER 1208**

BD: 3/18/2021    Tattoo: 1119    Reg #: 20192321

#H A Image Maker 0415  
**Marcys 19 Image Maker 16-9**  
 Marcys 13 Ethelda E 15-3  
 #GDAR Game Day 449  
**R&D Lass 213-035**  
 R&D Miss Expedition 035 -518

#Hero 6267 of R R 2418  
 H A Rito Blackcap 9038  
 #Sitz Upward 307R  
 #Marcys 01 Ethelda E 82-1  
 #Boyd New Day 8005  
 #G D A R Miss Wix 474  
 R&D Freightliner 705T  
 R&D Miss Expedition 103-518

BW	98
ADJ 205	748
WWR	107
Proj. Sale Day Wt.	1188
Adj. Scrotal	37.6
Dam's Ratio	7/105

CE	BW	WW	YW	Milk	SC	DOC	Marb.	REA	\$M
6	1.7	73	123	36	1.44	5	0.83	0.32	79

BD: 4/7/2021    Tattoo: 1208    Reg #: 20192343

#H A Image Maker 0415  
**Marcys 19 Image Maker 16-9**  
 Marcys 13 Ethelda E 15-3  
 #S A V Mustang 9134  
**OSA MUSTANG RITO112 by X81**  
 OSA Rito 112 of L817 X81

#Hero 6267 of R R 2418  
 H A Rito Blackcap 9038  
 #Sitz Upward 307R  
 #Marcys 01 Ethelda E 82-1  
 #S A V Final Answer 0035  
 #S A V Emblynette 7415  
 #Rito 112 of 2536 Rito 616  
 OSA Bar Ext Krugerrand 817

BW	89
ADJ 205	738
WWR	106
Proj. Sale Day Wt.	1013
Adj. Scrotal	34.3
Dam's Ratio	7/98

CE	BW	WW	YW	Milk	SC	DOC	Marb.	REA	\$M
9	1.3	65	114	37	0.92	11	0.63	0.36	63

This bull will catch your eye. His dam has been a good cow for a long time, not only in terms of production, but she was perfect footed, had an excellent udder, and was moderate in her frame and mature size.

One of only two April calves in the sale. We love seeing Mustang on the bottom side of a pedigree, we feel he was one of the under rated Final Answer sons. The Mustang daughters are all high volume, easy fleshing cows.





## Lot 67 SAT MUSTANG 112

BD: 3/3/2021 Tattoo: 112 Reg #: 20193668

#S A V Final Answer 0035	#Sitz Traveler 8180	BW	75
<b>#S A V Mustang 9134</b>	S A V Emulous 8145	ADJ 205	629
#S A V Emblynette 7415	#S A V Net Worth 4200	WWR	108
S A V Raindance 6848	#S A V Emblynette 7260	Proj. Sale Day Wt.	1083
<b>SAT Mabel 951</b>	#Coleman Charlo 0256	Adj. Scrotal	38.5
SAT Mabel 331	S A V Blackcap May 4136	Dam's Ratio	1/108
	#Coleman Regis 904		
	SAT Mabel 901		

CE	BW	WW	YW	Milk	SC	DOC	Marb.	REA	\$M
12	-0.6	51	97	34	0.89	16	0.4	0.52	58

This calving ease Mustang is the first of 3 ¾ brothers, all out of Raindance two-year-olds. His Regis granddam solidifies his low-birth-weight projection with a BW ratio of 6/90 and she follows that with a respectable WW ratio of 6/100. She also owns a calving interval of 6/365 and has caught AI every year.

## Lot 68 SAT MUSTANG 159

BD: 3/10/2021 Tattoo: 159 Reg #: 20193684

#S A V Final Answer 0035	#Sitz Traveler 8180	BW	77
<b>#S A V Mustang 9134</b>	S A V Emulous 8145	ADJ 205	618
#S A V Emblynette 7415	#S A V Net Worth 4200	WWR	106
S A V Raindance 6848	#S A V Emblynette 7260	Proj. Sale Day Wt.	1038
<b>SAT Lass 950</b>	#Coleman Charlo 0256	Adj. Scrotal	34.3
SAT Lass 6206	S A V Blackcap May 4136	Dam's Ratio	1/106
	#Koupal Juneau 797		
	R&D Lass 911-104		

CE	BW	WW	YW	Milk	SC	DOC	Marb.	REA	\$M
12	0.5	57	103	36	1	13	0.17	0.58	69

Another calving ease Mustang x Raindance. His granddam has caught AI every year of her life and is a full sister to Juneau 706, our top selling bull in 2018 that we have used in our AI program.



Abby, Hadley & Cade Talkington

## Lot 69 SAT MUSTANG 131

BD: 3/7/2021 Tattoo: 131 Reg #: 20193681

#S A V Final Answer 0035	#Sitz Traveler 8180	BW	82
<b>#S A V Mustang 9134</b>	S A V Emulous 8145	ADJ 205	595
#S A V Emblynette 7415	#S A V Net Worth 4200	WWR	102
S A V Raindance 6848	#S A V Emblynette 7260	Proj. Sale Day Wt.	1033
<b>SAT Eola 965</b>	#Coleman Charlo 0256	Adj. Scrotal	35.2
SAT Eola 505	S A V Blackcap May 4136	Dam's Ratio	1/102
	#Soo Line Motive 9016		
	Osa Mustang Krugger of U17		

CE	BW	WW	YW	Milk	SC	DOC	Marb.	REA	\$M
9	1.3	66	112	29	1.18	20	0.59	0.4	73

The last of the ¾ brothers by Mustang. This bull's granddam by Motive is 5/103.

reference sire



3 Sons Sell

CE	BW	WW	YW	Milk	SC	Doc	Marb	REA	\$M
11	0.1	38	70	35	1.46	18	0.53	0.22	61

## SAV MUSTANG 9134

Reg # 16397246

SAV Final Answer 0035 x SAV Net Worth 4200

When we bought the Owl Springs Angus herd in 2013, we got several Mustang daughters. Over the years we gained an appreciation for the kind of cows they were. Moderate, easy-fleshing, docile, and extremely high-capacity females. We love to see Mustang on the bottom side of a pedigree. We found a little semen so we used it to make some females. In the process we got a nice set of calving ease ¾ brothers out of Raindance 2-year-olds.





*Life*

**IS BETTER WITH ANGUS CATTLE AND BASKETBALL**







# Thank You

**FOR YOUR CONTINUED INTEREST AND SUPPORT**







7AN600  
*Wolverine*

**SAT WOLVERINE 916**

BD: 2/21/2019 Tattoo: 916 Reg #: 19544206

Tehama Upward Y238 #Sitz Upward 307R  
**Tehama Tahoe B767** Tehama Elite Blackbird T735  
 Tehama Mary Blackbird Y684 #S A V Final Answer 0035  
 Brooking Prosecutor 222 Tehama Mary Blackbird T073  
**SAT Prairie 788** #Soo Line Motive 9016  
 Prairie 324 Soo Line Lass 0400  
 #Rito 9M25 of Rita 5F56 Pred SAT  
 Prairie 5529 BCBR

CE	BW	WW	YW	Milk	SC	DOC	Marb.	REA	SM
13	-2.6	68	105	27	-.03	16	0.41	.90	100

7AN600 WOLVERINE is moderate for size with massive rib design, incredible soundness and above average muscle shape.

He is an excellent choice for combining a positive \$EN with elite Maternal Value and excellent phenotype.

Semen available through Select Sires.



*SAT Prairie 788 • Dam of Wolverine*



**Shane & Amanda Talkington** • Belfield, ND  
 701-575-4159 • 701-290-7222 • talkingtonangusranch@yahoo.com  
 www.TalkingtonAngusRanch.com



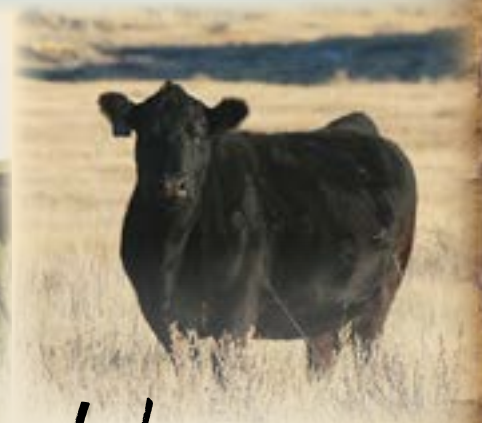


# DEDICATED. COMMITTED.

WHOLE HERD REPORTING WITH MATERNALPLUS



Raising quality Angus cattle takes **COMMITMENT**. We take that seriously, which is why we are **DEDICATED** to not only improve our genetics, but also prepare for the future of the Angus breed. We believe that commitment starts with MaternalPlus. Contact AGI at 816-383-5100 or [agi@angus.org](mailto:agi@angus.org) for more information.



*Dams of bulls in this sale!*







# TALKINGTON ANGUS RANCH

3137 136TH AVE SW  
BELFIELD, ND 58622

701-575-4159 701-290-7222

[www.TalkingtonAngusRanch.com](http://www.TalkingtonAngusRanch.com)



Shane & Amanda Talkington  
Abby, Hadley & Cade

*Maternally oriented • Balanced-trait philosophy*

